



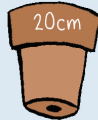
How to build a bumblebee nest

wildlife
watch



You will need:

- terracotta flower pot



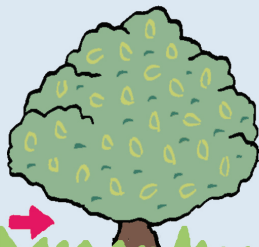
- trowel



- dry grass or moss

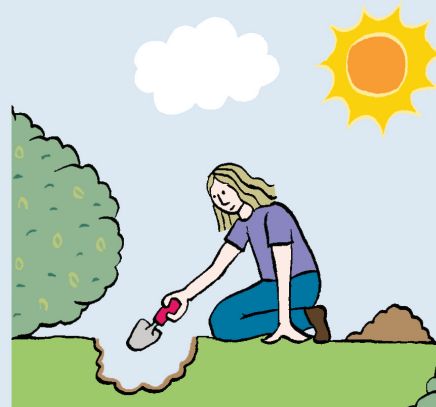


- sheltered spot that gets some sun



(preferably under a bush)

- 1 Dig a small, shallow hole under a bush. Your chosen site should not get too hot or too cold, and be in sun for about half of the day.



- 2 Fill the flowerpot with dry grass and/or moss.



- 3 Half-bury the flowerpot upside down in the hole. Position it at an angle so that the hole in the bottom points out.

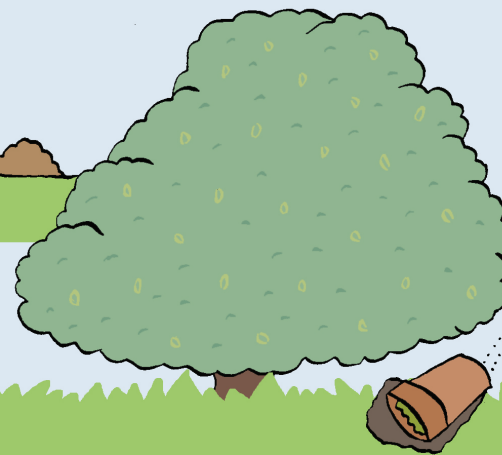


Illustration: Corinne Welch © Copyright Royal Society of Wildlife Trusts 2015